

DETECTION CANINE RESEARCH, DEVELOPMENT, TESTING & EVALUATION

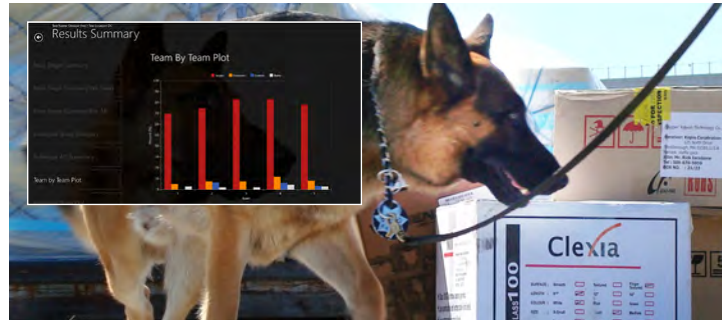
BATTELLE Detection Canine RDT&E Services

- Performance Assessments
- Evaluation of Training Aids and Methodologies
- Development of Innovative Technologies
- Backed by Battelle CBRNE Defense Expertise and Infrastructure
- Proven Performance since 1994

BATTELLE

Detection canine teams play an integral role in protecting our citizens, assets, law enforcement and warfighters. Combining a workforce of engineers, chemists, biologists and veterinarians with over 20 years of canine-focused RDT&E experience, Battelle continues to provide the insight and tools necessary to understand, expand, improve and advance canine team performance and operations.

GETTING THE BEST OUT OF MAN'S BEST FRIEND



Conducting Performance Assessments

Through basic odor recognition tests and operational setting-based assessments, Battelle's rigorous and objective test design, execution and reporting provide vital insight to the true level of performance of our nation's detection canine teams, helping identify weaknesses and means of improvement.

Our team provides intelligent test matrix design, thorough test procedure development, unbiased test setup and execution, electronic data capture linked to video evidence and extensive data analysis and presentation.

Evaluating Training Aids and Methodologies

Using the same principles as those proven in our performance assessments, Battelle's researchers verify the validity of commercially available and developmental training aids aimed at providing a means of imprinting on otherwise problematic contraband/threats. Past programs have included homemade explosives targets, as well as chemical and biological targets. Such studies make full use of Battelle's specialized facilities, and experts. Battelle also conducts specialized testing to enable agencies to close knowledge gaps in their training; examples include 'odor generalization' and evaluation of commonly practiced training philosophies.

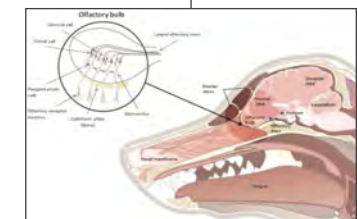
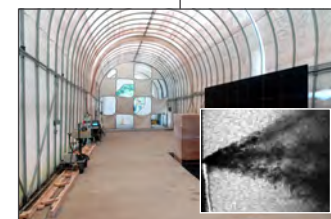
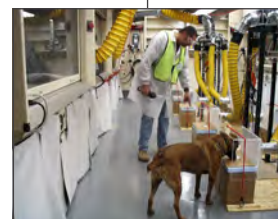
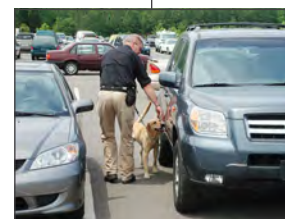
Developing Breakthrough Technologies

Employing its diverse staff and wide-ranging expertise, Battelle further advances working dog teams by providing new capabilities and resources. Examples include design and development of tablet-based data logging tools; design, fabrication and testing of an improved human scent-collection unit with applications in forensics and tracking/trailing; use of infrared video technology to film odor plumes under various conditions for purposes of generating multimedia training solutions; and initiation of groundbreaking research to capture, process and decode neurological signals from detection canines.

Solving the World's Most Complex Chemical and Biological Defense Challenges

In addition to these detection canine RDT&E services, Battelle's more than 30 years of leadership in CBRNE defense includes research, development, testing and evaluation of threat detection sensors, personal protective equipment (PPE), chemical/biological agents and explosives; risk assessment software tools to help protect the nation against terrorism threats from weapons of mass destruction; and a wide range of impactful training capabilities.

Leading Detection Canine RDT&E for More than 20 Years



Every day, the people of Battelle apply science and technology to solving what matters most. At major technology centers and national laboratories around the world, Battelle conducts research and development, designs and manufactures products, and delivers critical services for government and commercial customers. Headquartered in Columbus, Ohio since its founding in 1929, Battelle serves the national security, health and life sciences, and energy and environmental industries. For more information, visit www.battelle.org.

800.201.2011 | solutions@battelle.org | www.battelle.org

Battelle and its logos are registered trademarks of Battelle Memorial Institute.

© Battelle Memorial Institute 2017. All Rights Reserved.

ID 556 01/17



BATTELLE
It can be done